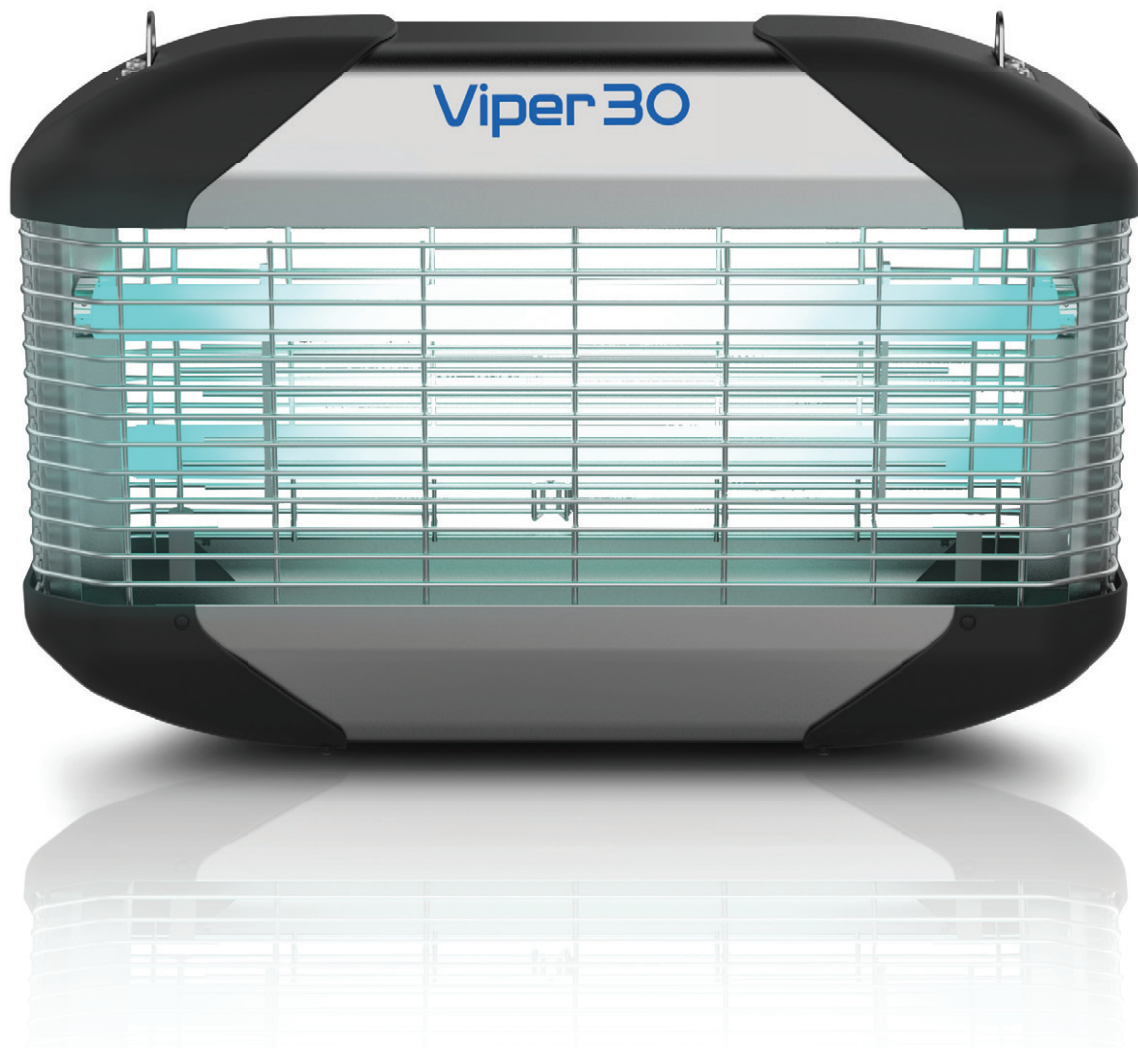


Viper30

VERSATILE AND COMPACT FLY TRAP FOR
COMMERCIAL APPLICATIONS



High performance unit with high voltage grid and glueboard options, designed for areas of high activity for flying insects.

- Quick and easy, tool free servicing
- Optional sleeved lamps for added safety in food production areas
- Free standing, wall mounted or ceiling suspended installation options

Viper 30



APPLICATIONS

- Shops
- Kitchens
- Bakeries
- Take-aways
- Supermarkets
- Warehouses

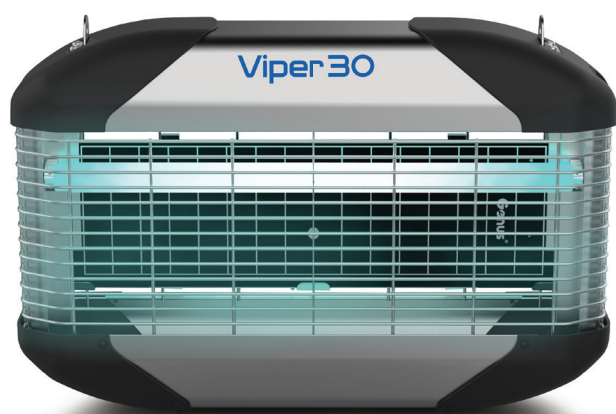
Combining high performance with versatility, Viper 30 provides a choice of mounting location, ensuring all application requirements are satisfied.

Fitted with two 15 W lamps, Viper 30 attracts flies into the high voltage grid where they are electrocuted and safely collected in the 70mm deep catch tray. Viper 30 is also available as a glue board unit with a large capacity, fully grid marked glue board for HACCP compliance.

The Viper 30 can be wall mounted, suspended from the ceiling or free standing, allowing for unit placement precisely where needed.

Viper 30 Catcher ILT

The Insect Light Trap version has a large capacity, grid marked glue board to assist with HACCP compliance.



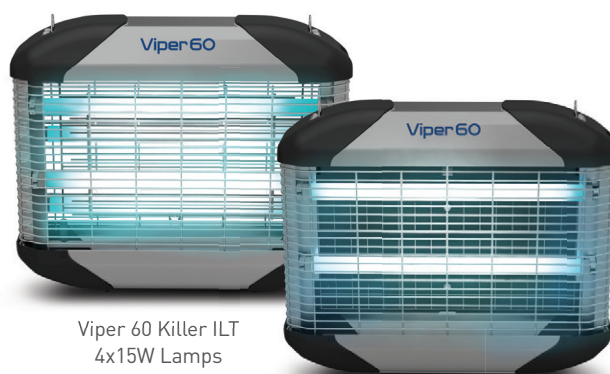
Glue board version

Features and Benefits

- Quick and easy, tool free servicing
- Optional sleeved lamps for added safety in food production areas
- Free standing, wall mounted or ceiling suspended installation options
- Available as a glue board catcher or a high voltage killer unit

Also Available

Viper 60



Viper 60 Killer ILT
4x15W Lamps

Viper 60 Catcher ILT
4x15W Lamps

Order Code	Description	Dimensions mm (H x W x D)	Weight	Lamps
V3C30-1GXXXXXXXXX	Viper 30 Catcher, Standard Lamps	337 x 511 x 134	5.5kg	2 x 15 W
V3C30-2GXXXXXXXXX	Viper 30 Catcher, Sleeved Lamps	337 x 511 x 134	5.5kg	2 x 15 W
V3K30-1GXXXXXXXXX	Viper 30 Killer, Standard Lamps	337 x 511 x 134	6kg	2 x 15 W
V3K30-2GXXXXXXXXX	Viper 30 Killer, Sleeved Lamps	337 x 511 x 134	6kg	2 x 15 W

NOTE: Do not position high voltage units within food preparation areas



LODI MAROC

3ème étage, Immeuble Sania,
140, Boulevard Mohamed Zerkouni,
CASABLANCA 20250
MAROC

Johnny BOUREL - Directeur Général

Tél. +212 5 22 42 17 14
GSM : +212 6 62 71 70 36 (Maroc)
+ 33 6 80 58 64 83 (France)
bourel@lodi.fr
www.lodi-maroc.ma